

Operator's Manual Table of Contents

MODEL 1-1/4 AGE - 1-1/2 AGE - 2-1/2 AGE

PORTABLE FIRE PUMPS

Description, Operation & Maintenance, Lubrication-----	1200505
Related Drawing-----	DAC0601
	DAC0602
	DGC0500
	DGC0504
	DGC0223
	DGM0104
	DAC0901
	DAC0700
	DAC0701
	DAC0114
 Exhaust Primer -----	 1200557
Hand Primer -----	1200558
Mechanical Seal -----	1200583
Seal installation Instructions-----	1201040
Packing Adjustment-----	1200504
Operator Instructions – Definitions-----	1200510
Chart – Discharge Nozzle Pressure-----	1201501
Chart – Friction Loss and Reach-----	1201502

Model: 1-1/4 AGE - 1- 1/2 Age - 2 1/2 AGE Pump Serial Number: _____

**IF FURTHER INFORMATION IS NEEDED, CALL W.S. DARLEY & CO. AT
CHIPPEWA FALLS, WI. AT 800-634-7812 or 715-726-2650**

**OPERATING INSTRUCTIONS FOR
MODEL 1-1/4 AGE - 1-1/2 AGE - 2-1/2 AGE
PORTABLE PUMPS**

See Engine Instruction Before Operating This Unit

WARNING: DO NOT USE THIS PUMP FOR HOSE TESTING

LUBRICATION

Keep the pump transmission case filled to oil level plug with SAE 80W90 Gear Lube oil.

Change the transmission oil with new oil after every 50 hours of operation or every 6 months.

Change the engine oil, & maintain its level according to the recommendations of the engine manufacturer. These recommendations should be found in the engine manual supplied by the engine manufacturer.

PREPARATION FOR PRIMING

Check coupling gaskets and connect hose lines with coupling properly tightened.

Any size of suction and discharge hose may be used, depending on the volume of water required.

Be certain that the suction hose (or pipe) is absolutely air tight. The pump will not lift water if the suction side of the pump has the slightest air leak.

A strainer with openings not larger than 1/8" mesh must always be used on the end of the suction line when pumping dirty water.

Avoid air traps in suction hose if possible.

Keep the suction intake strainer well above the bottom of stream or pond to prevent pickup of soil and other foreign matter. If the strainer must lie on the bottom, a metal plate or pan should be laid under it.

The suction intake should be submerged several inches to prevent sucking in air. A cover laid over the top of strainer will allow the pump to operate with a minimum of submergence.

Close drain valve and all other openings into pump casing.

Do not start the engine until everything is in readiness for pumping.

TO PRIME A PUMP NOT EQUIPPED WITH PRIMER

Install a foot valve and strainer on the submerged end of suction line.

Suction line must slope down all the way from the pump to water.

Pour water into the pump through the discharge opening until pump casing and suction line are completely filled, before starting the engine.

NOTE: If your pump is equipped with a discharge check valve, it will be necessary to prop it open.

RUNNING THE ENGINE

Never start the engine with the throttle wide open.

Never run the pump at high speed at any time unless it is discharging water.

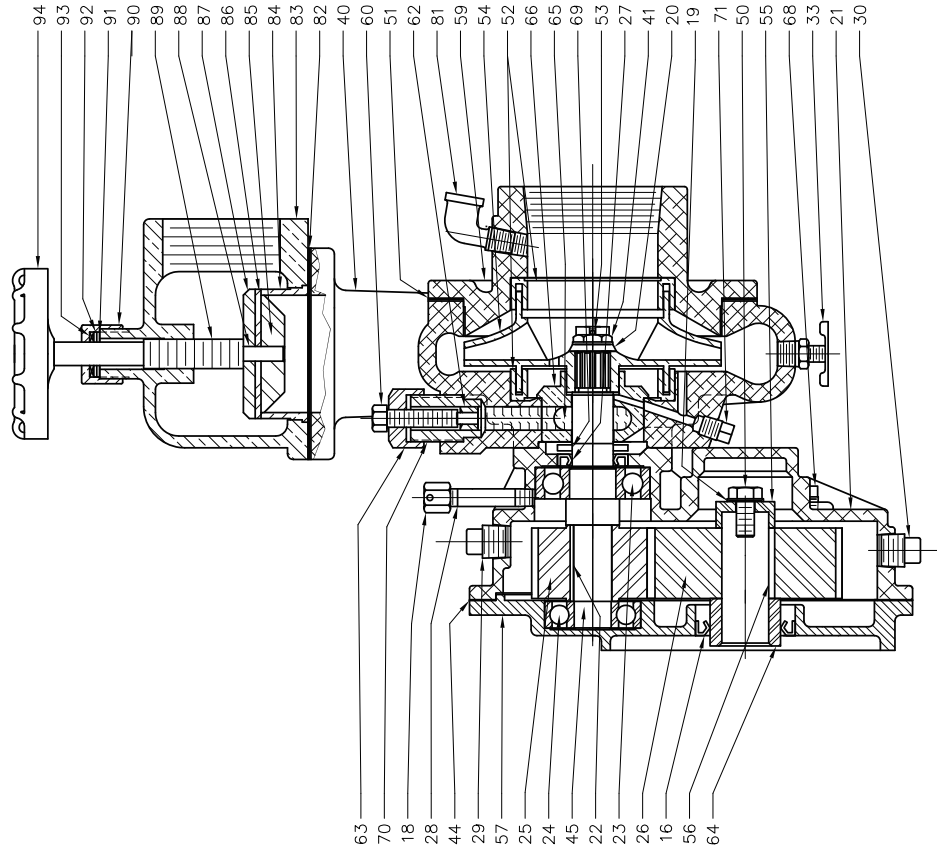
Never run the pump at any speed without water longer than the short interval required for priming.

ALL DIESEL ENGINES

All diesel engines must be throttled back by the operator in high load situations. This must be done to prevent over-fueling the engine as is evident by black exhaust smoke. Careful readjustment of the throttle will not cause a decrease in pump performance. Throttle back until pump performance just begins to decrease.

CAUTION: Over-fueling the engine will cause dilution of the engine oil with diesel fuel and premature wear on the cylinder walls and bearings.

REP#	NAME OF PART	QTY
16	OIL SEAL - CRANK CASE	1
18	VENT CAP	1
19	LOCKWASHER - 7/16	1
20	IMPELLER WASHER	1
21	GEAR CASE	1
22	PINION KEY	1
23	BEARING	1
24	BEARING	1
25	PINION GEAR	1
26	DRIVE GEAR	1
27	OIL SEAL	1
28	VENT PIPE - 1/8 NPT x2	1
29	PIPE PLUG - 3/8 NPT	1
30	PIPE PLUG - MAGNETIC - 3/8 NPT	1
33	DRAIN COCK	1
40	PUMP CASING	1
41	IMPELLER NUT	1
44	GEAR CASE GASKET	1
45	IMPELLER SHAFT	1
50	HEX HEAD CAP SCREW	1
51	PUMP CASING GASKET	2
52	IMPELLER SEAL RING	1
53	COTTER KEY, STAINLESS STEEL	1
54	IMPELLER	1
55	GEAR RETAINING WASHER	1
56	DRIVE GEAR KEY	1
57	MOTOR ADAPTER	1
59	OUTBOARD HEAD	1
60	PACKING PLUNGER SCREW	1
62	PISTON	1
63	GLAND NUT	1
64	DRIVE GEAR SPACER	1
65	PACKING	6 oz.
66	PACKING BOX	1
68	OIL LEVEL PLUG	1
69	WATER SLINGER	1
70	GLAND GUIDE	1
71	PIPE PLUG - 1/8 NPT	1
81	STREET ELBOW - 1/4 NPT	1
82	DISCHARGE HEAD GASKET	1
83	DISCHARGE HEAD	1
84	CHECK VALVE SEAT	1
85	CHECK VALVE DIFFUSER	1
86	CHECK VALVE RUBBER	1
87	CHECK VALVE PLATE	1
88	CHECK VALVE STEM	1
89	VALVE STEM	1
90	VALVE GLAND NUT	1
91	STUFFING BOX GASKET	1
92	STUFFING BOX WASHER	1
93	VALVE STEM PACKING	1
94	HANDWHEEL	1



	DATE	CHANGE
	W.S. DARLEY & CO. MELROSE PARK, ILL. - CHIPPEWA FALLS, WI.	
	DATE	CROSS SECTION
	DWG - 2.5AGE PUMP, PACKING	
DRN	TED	DATE MAR25,92
CHD		SCALE 1/2
TRCD		

	OLD PART NO.	DO NOT SCALE PRINT
	A639	
	PATTERN NO.	ALL DIMENSIONS IN INCHES UNLESS NOTED
		REPRODUCTION IS PROHIBITED

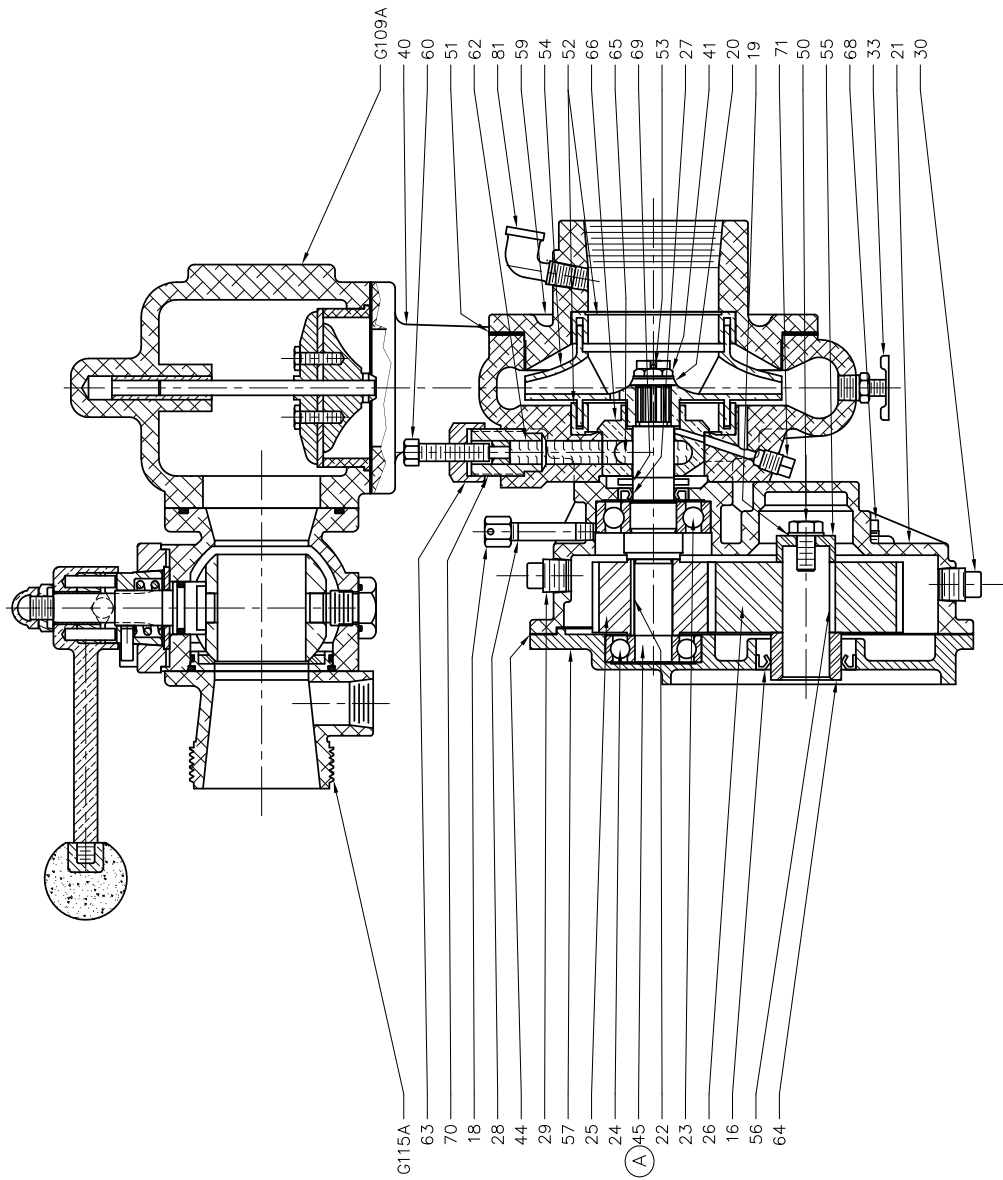
MATERIAL:

THIS DESIGN IS THE PROPERTY OF W.S. DARLEY AND CO. UNAUTHORIZED REPRODUCTION IS PROHIBITED

DAC0601

LTR	DESCRIPTION	DATE	CHG NO	APPRD
A	UPDATED SHOULDER ON SHAFT	12/03/07	2007-448	RUG

REVISIONS



REP#	NAME OF PART	QTY
16	OIL SEAL - CRANK CASE	1
18	VENT CAP	1
19	LOCKWASHER	1
20	IMPELLER WASHER	1
21	GEAR CASE	1
22	PINION KEY	1
23	BEARING	1
24	BEARING	1
25	PINION GEAR	1
26	DRIVE GEAR	1
27	OIL SEAL	1
28	VENT PIPE - 1/8 NPT x2	1
29	PIPE PLUG - 3/8 NPT	1
30	PIPE PLUG - MAGNETIC - 3/8 NPT	1
33	DRAIN COCK	1
40	PUMP CASING	1
41	IMPELLER NUT	1
44	GEAR CASE GASKET	1
45	IMPELLER SHAFT	1
50	HEX HEAD CAP SCREW	1
51	PUMP CASING GASKET	1
52	IMPELLER SEAL RING	2
53	COTTER KEY, STAINLESS STEEL	1
54	IMPELLER	1
55	GEAR RETAINING WASHER	1
56	DRIVE GEAR KEY	1
57	MOTOR ADAPTER	1
59	OUTBOARD HEAD	1
60	PACKING PLUNGER SCREW	1
62	PISTON	1
63	GLAND NUT	1
64	DRIVE GEAR SPACER	1
65	PACKING BOX	6 oz.
66	PACKING	1
68	OIL LEVEL PLUG	1
69	WATER SLINGER	1
70	GLAND GUIDE	1
71	PIPE PLUG - 1/8 NPT	1
81	STREET ELBOW - 1/4 NPT	1
81	PIPE PLUG - 1/4 NPT	1
G109A	DISCHARGE HEAD ASSEMBLY (G109A SERIES ASSEMBLIES SEE DRAWING 62486)	1
G115A	BALL VALVE ASSEMBLY (G115A SERIES ASSEMBLIES SEE DRAWING G1200)	1

W.S. DARLEY & CO.
MELROSE PARK, IL - CHIPPEWA FALLS, WI

DWG - 2.5AGE PUMP, PACKING
CROSS SECTION

DATE MAR25,92
SCALE 1/2

DRN TED
CHKD
TRCD

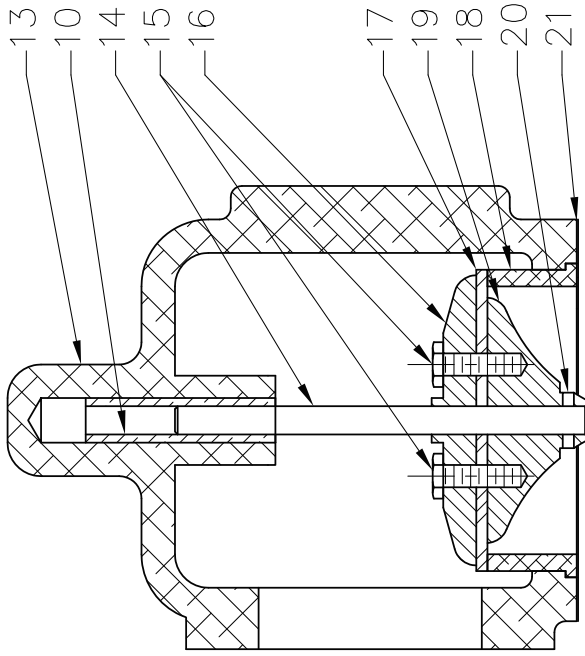
OLD PART NO. A640
SPEC NO. 2 1/2 AGE A9

DO NOT SCALE PRINT

THIS DESIGN IS THE PROPERTY OF W.S. DARLEY AND CO. - UNAUTHORIZED REPRODUCTION IS PROHIBITED

DAC0602

REP #	NAME OF PART	QTY
10	CHECK VALVE BUSHING	1
13	DISCHARGE HEAD	1
14	CHECK VALVE STEM	1
15	HEX HEAD CAP SCREW	2
16	CHECK VALVE PLATE	1
17	CHECK VALVE RUBBER	1
18	CHECK VALVE SEAT	1
19	CHECK VALVE DIFFUSER	1
20	PIN	1
21	DISCHARGE HEAD GASKET	1



TOLERANCE
EXCEPT
AS NOTED
.00 ±.03
.000 ±.010
ANGLES ±1°

DR'N TED
CHKD
TRCD

W.S. DARLEY & CO.
MELROSE PARK, IL - CHIPPEWA FALLS, WI

DWG - DISCHARGE HEAD, ALUM

DATE AUG25,92
SCALE 1/2

DGC0500

OLD PART NO.
G2486

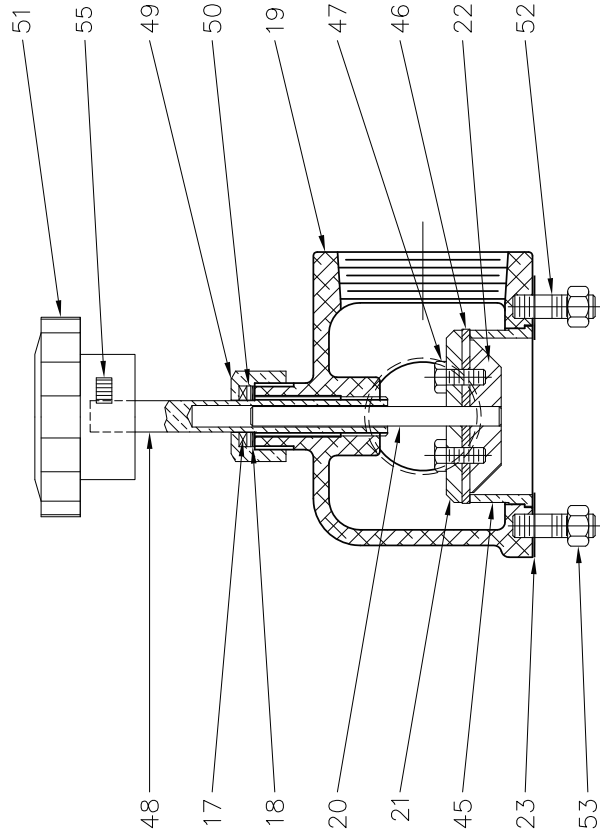


DO NOT SCALE PRINT

ALL DIMENSIONS IN INCHES UNLESS NOTED

THIS DESIGN IS THE PROPERTY OF W.S. DARLEY AND CO. - UNAUTHORIZED REPRODUCTION IS PROHIBITED

REVISIONS			
LTR	DESCRIPTION	DATE	CHG NO.
			APPR'D



REP. NO.	NAME OF PART	QTY.
17	VALVE STEM PACKING	1
18	STUFFING BOX GASKET	1
19	DISCHARGE HEAD	1
20	CHECK VALVE STEM	1
21	CHECK VALVE PLATE	1
22	CHECK VALVE DIFFUSER	1
23	DISCHARGE HEAD GASKET	1
24	CHECK VALVE SEAT	1
25	CHECK VALVE RUBBER	1
26	HEX HEAD CAP SCREW	2
27	VALVE STEM	1
28	GLAND NUT	1
29	STUFFING BOX WASHER	1
30	HANDWHEEL	1
31	STUD	4
32	HEX NUT	4
33	JAM NUT	1
34	SOCKET SET SCREW	1

TOLERANCE EXCEPT AS NOTED		W.S. DARLEY & CO.	
FRAC DIM ±.01	DEC DIM ±.005	MELROSE PARK, IL - CHIPPEWA FALLS, WI	
ANGLES ±1		DWG - DISCHARGE HEAD ASSY	
DRN	DMD	DATE 03/27/00	SCALE 1/2
CHKD	TED	DGC0504	
TRGD			



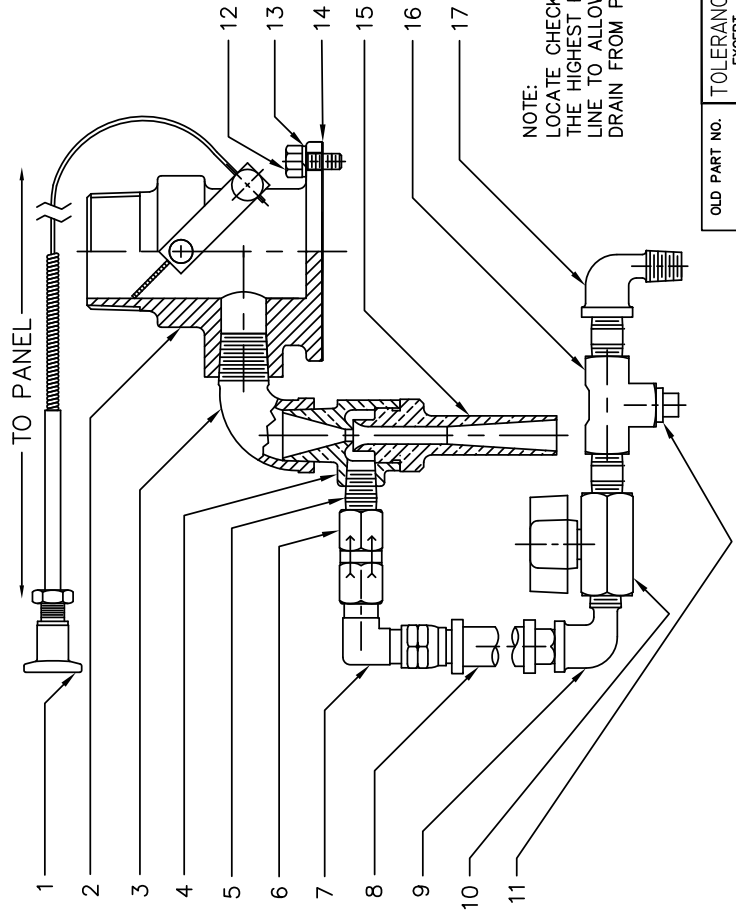
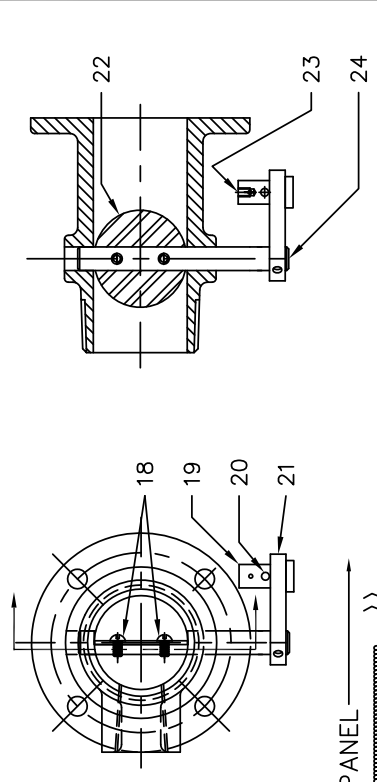
OLD PART NO. —

DO NOT SCALE PRINT

ALL DIMENSIONS IN INCHES UNLESS NOTED

THIS DESIGN IS THE PROPERTY OF W.S. DARLEY AND CO. - UNAUTHORIZED REPRODUCTION IS PROHIBITED

REVISIONS			
LTR	DESCRIPTION	DATE	CHG NO. APPR'D



NO.	NAME OF PART	QTY
1	PRIMER CABLE	1
2	EXHAUST PRIMER BODY	1
3	90° STREET ELBOW 1/2"	1
4	PRIMER JET	1
5	CLOSE NIPPLE 1/4"	3
6	CHECK VALVE	1
7	ELBOW 90° .25 NPT X .38 JICJ	1
8	PRIMER HOSE	1
9	90° STREET ELBOW 1/4"	1
10	SHUTOFF VALVE	1
11	PIPE PLUG 1/4"	1
12	HHCS-1/4-20 X 0.50	4
13	LOCKWASHER	4
14	PRIMER GASKET	1
15	PRIMER THROAT	1
16	TEE - 1/4" NPT	1
17	PRIMER SUCTION FITTING	1
18	RHMS - NO.6-32 X 0.25	3
19	PRIMER LEVER PIN	1
20	DRIVE LOK PIN	1
21	PRIMER LEVER	1
22	ELLIPTICAL PRIMER DISK	1
23	SSS-NO.6-32 X 0.19	1
24	PRIMER STEM	1

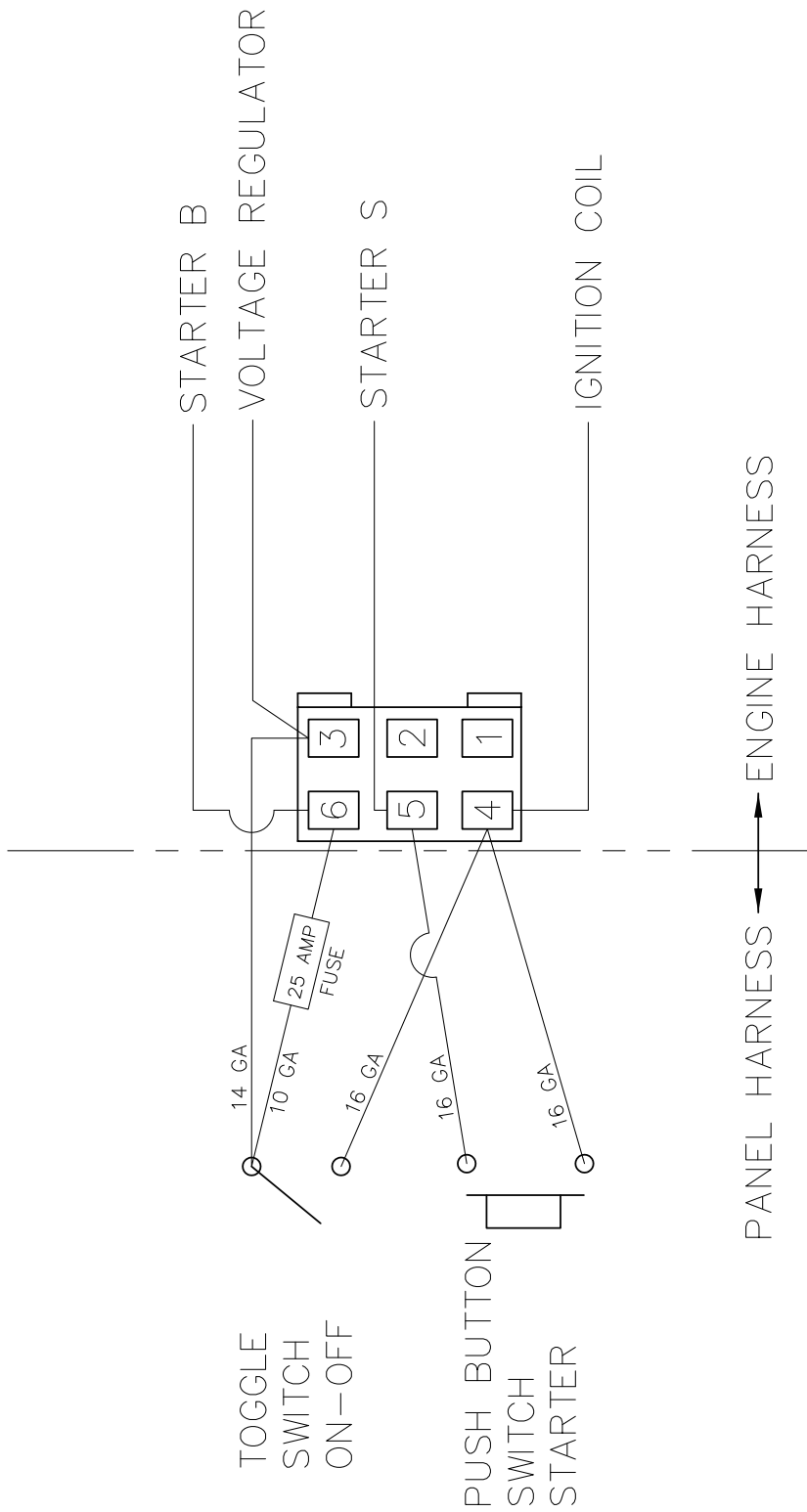
NOTE:
NUMBER OF PIPE FITTINGS WILL
VARY DEPENDING ON APPLICATION

NOTE:
LOCATE CHECK VALVE (6) IN
THE HIGHEST POINT OF PRIMER
LINE TO ALLOW WATER TO
DRAIN FROM PRIMER LINE.

INCH
[MILLIMETER]

THIRD ANGLE PROJECTION

TOLERANCE EXCEPT AS NOTED .00 ±.03 .000 ±.010 ANGLES Z1.		TOLERENCE DMD CHKD TRGD	
OLD PART NO.	PATTERN NO.	DATE	SCALE
—	—	18JUL2006	1/2
MATERIAL DESCRIPTION: SEE LIST		DO NOT SCALE PRINT	
THIS DESIGN IS THE PROPERTY OF W.S. DARLEY AND CO. - UNAUTHORIZED REPRODUCTION IS PROHIBITED		ALL DIMENSIONS IN INCHES UNLESS NOTED	
W.S. DARLEY & CO. MELROSE PARK, IL - CHIPPEWA FALLS, WI		ASSEMBLY - PRIMER EXHAUST	
DGC0223		DATE	



PANEL HARNESS ← → ENGINE HARNESS

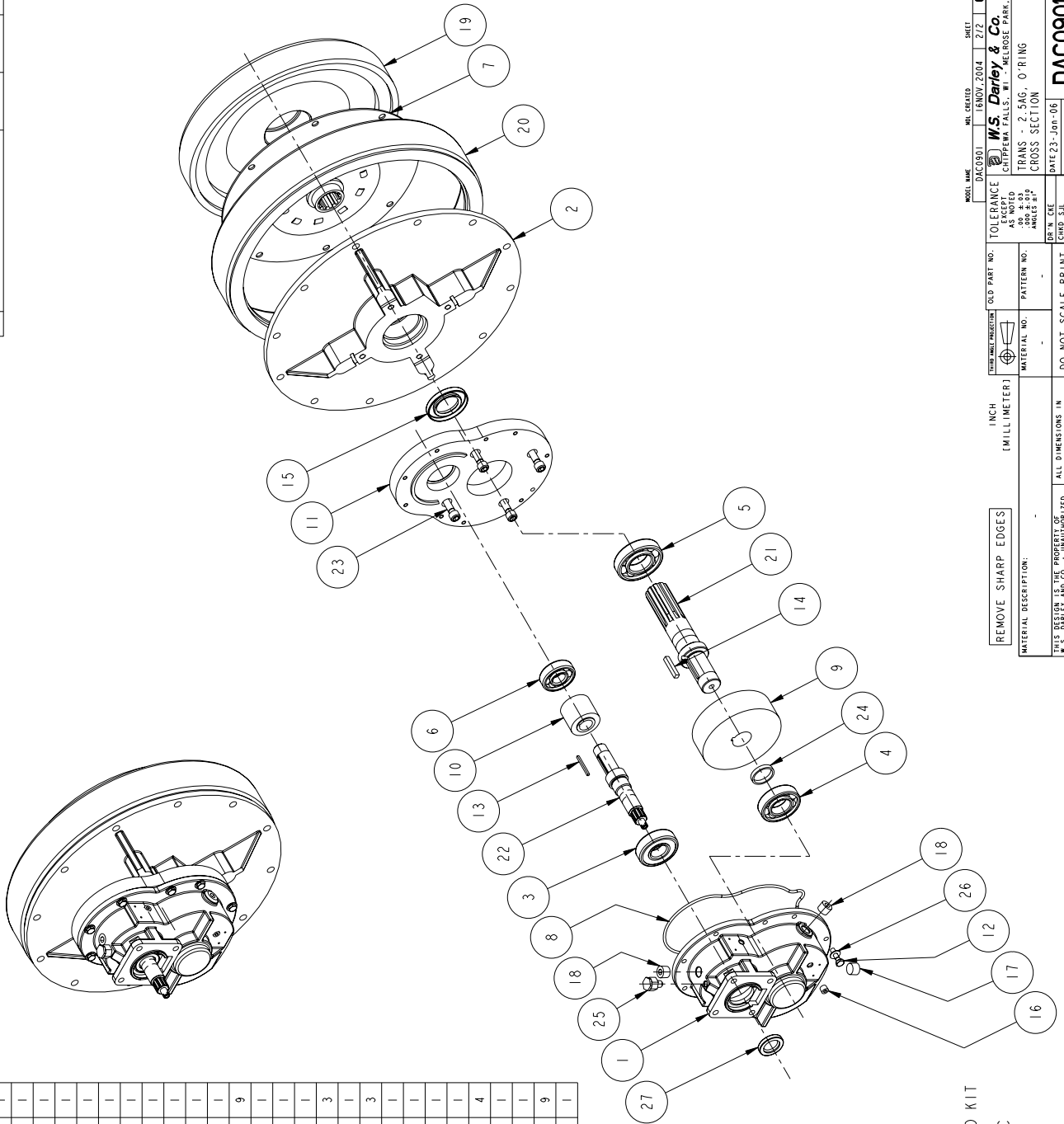
WRAP ALL PANEL HARNESS WIRES
 IN 3/8" FLEXGARD CONVOLUTED LOOM

TOLERANCE EXCEPT AS NOTED FRAC DIM ±.01 .00 ±.01 .000 ±.005 ANGLES ±1°		PART NO. RC	DATE FEB25,92	CHANGE W.S. DARLEY & CO. MELROSE PARK, IL - CHIPPEWA FALLS, WI
DR'N RC	CHKD TRCD	OLD PART NO. G2418	PATTERN NO.	DWG - WIRING DIAGRAM 24 HP ONAN
MATERIAL NO. -	DO NOT SCALE PRINT	DO NOT SCALE PRINT	DATE FEB25,92	SCALE 1/1
THIS DESIGN IS THE PROPERTY OF W.S. DARLEY AND CO. - UNAUTHORIZED REPRODUCTION IS PROHIBITED	ALL DIMENSIONS IN INCHES UNLESS NOTED	DO NOT SCALE PRINT	DATE FEB25,92	SCALE 1/1

DGMO104

REVISIONS		
LTR	DESCRIPTION	DATE

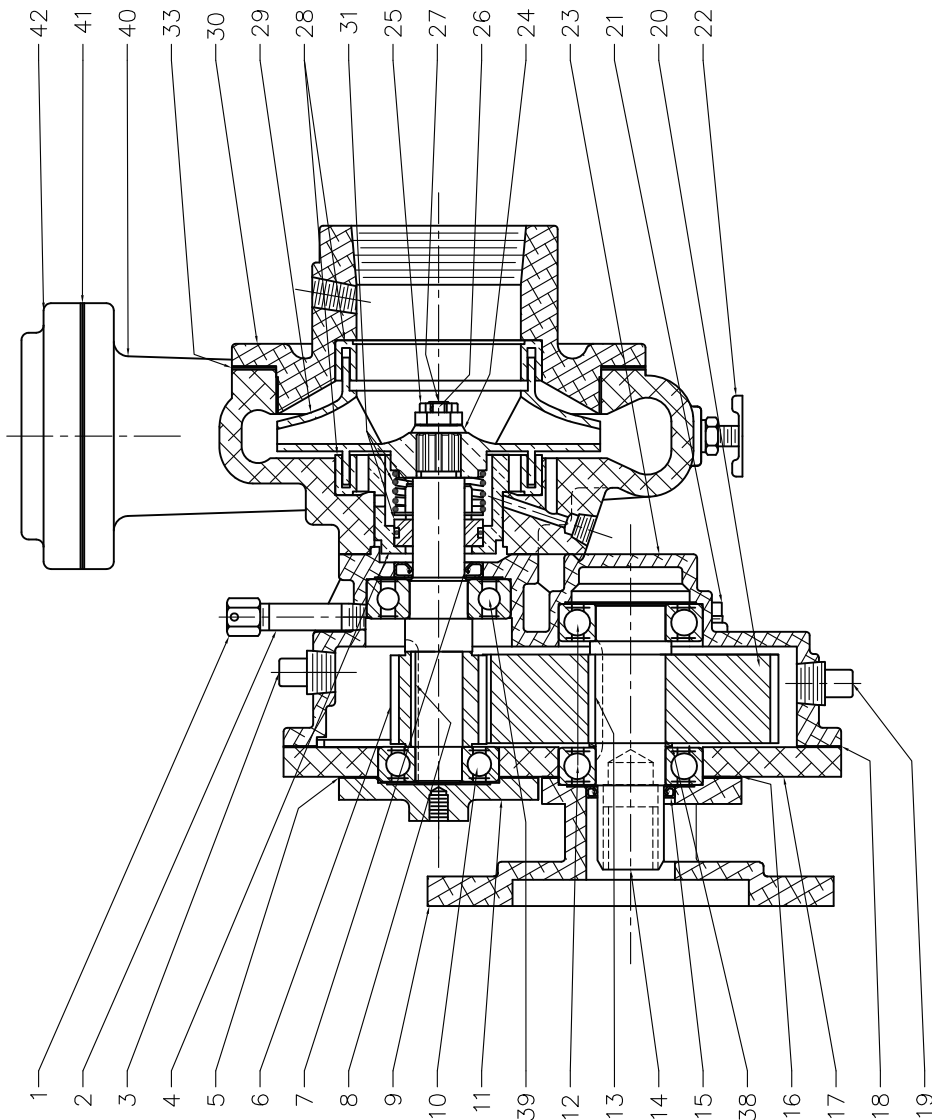
NO.	DESCRIPTION	PART NO.	QTY.
1	GEARCASE - 2.5AGE	-	1
2	ADAPTER - ENGINE, SAE	-	1
3	BEARING - BALL, 305SF	-	1
4	BEARING-BALL, 206	-	1
5	BEARING-BALL, 207SF	-	1
6	BEARING-BALL, 304S	-	1
7	DRIVE DISC - TF, W/1 SOLATOR	-	1
8	O-RING - 7.75 x 8.00 x 0.12 - FORMED-	-	1
9	GEAR - DRIVE, AG, 70T, 16DP	-	1
10	GEAR - PINION, AG, 16DP, 20PA	-	1
11	ADAPTER - ENGINE, A	-	1
12	HHCS - .250-20 x 1.00, SST	-	9
13	KEY - SO., 0.12 x 0.12 GR2	-	1
14	KEY - SO., 0.25 x 1.50, GR2	-	1
15	OIL SEAL - 1.375 ID X 2.506 OD	-	1
16	PLUG - PIPE, 0.125, ZN SOC HD	-	3
17	PLUG - PIPE, 0.375, MAG SOC HD	-	1
18	PLUG - PIPE, 0.375, ZN SOC HD	-	3
19	SAE ENGINE FLYWHEEL	-	1
20	SAE FLYWHEEL HOUSING	-	1
21	SHAFT - DRIVE, AGE	-	1
22	SHAFT - IMPELLER, 2.5AG	-	1
23	SHCS - .375-16 x 1.25, GR8	-	4
24	SPACER - 1.39 x 1.18 x 0.30	-	1
25	VENT - GEARCASE, 1/8 NPT MALE	-	1
26	WASHER - FLAT, 0.25 ID, SST	-	9
27	OIL SEAL - 0.875 ID X 1.503 OD	-	1



REP NOS. 9 & 10 FOUND ON GEAR RATIO KIT
 REP NOS. 19 & 20 ARE WITH ENGINE
 REP NOS. 22 & 27 FOUND ON PUMP SPEC

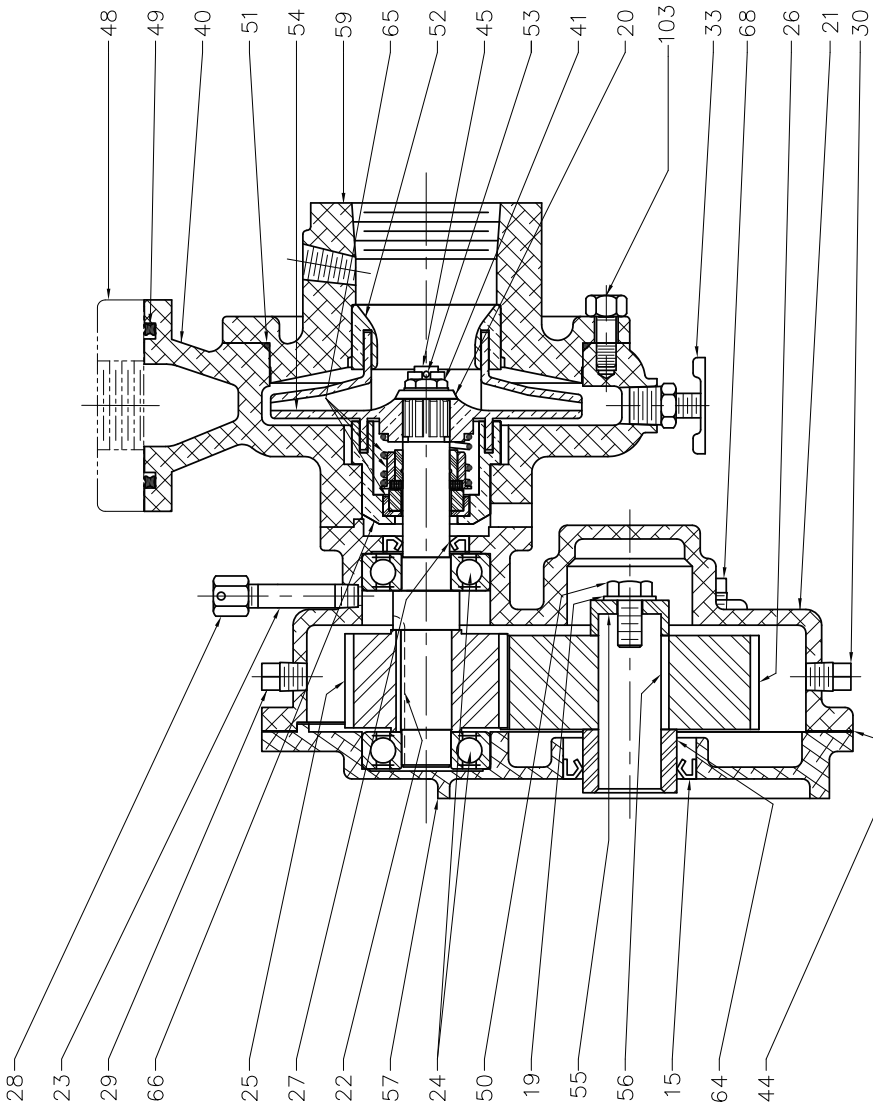
MODEL NAME	DAC0901	INCH	16 NOV. 2004	2/2	C
DATE CREATED	16 NOV. 2004	SCALE	0.250		
TOLERANCE	AS EXCEPTED	DO NOT SCALE	PRINT		
W.S. Darley & Co.	CHIPPWA FALLS, WI	DO NOT SCALE	PRINT		
TRANS - 2.5AG, O-RING	CROSS SECTION				
DATE 23-JUN-06	DR. N. CEE				
CHD. S.I.L.	TRCD				


REP#	NAME OF PART	QTY
1	VENT CAP	1
2	VENTPIPE	1
3	OIL FILL PLUG	1
4	PACKING BOX	1
5	BEARING CAP GASKET	1
6	PINION GEAR	1
7	OIL SEAL	1
8	PINION KEY	1
9	MOTOR ADAPTER - SAE 'B'	1
10	BEARING	1
11	BEARING CAP	1
12	BEARING	2
13	DRIVE GEAR KEY	1
14	DRIVE SHAFT	1
15	OIL SEAL	1
16	ADAPTER GASKET	1
17	GEAR CASE COVER	1
18	GEAR CASE GASKET	1
19	PIPE PLUG, MAGNETIC	1
20	DRIVE GEAR	1
21	OIL-LEVEL PLUG	1
22	DRAIN COCK	1
23	GEAR CASE	1
24	IMPELLER WASHER	1
25	IMPELLER NUT	1
26	COTTER KEY	1
27	IMPELLER SHAFT	1
28	IMPELLER SEAL RING	2
29	IMPELLER	1
30	OUTBOARD HEAD	1
31	MECHANICAL SEAL	1
33	PUMP CASING GASKET	1
38	GEAR SPACER	1
39	BEARING	1
40	PUMP CASING (VOLUTE)	1
41	DISCHARGE FLANGE GASKET	1
42	DISCHARGE FLANGE 2 1/2	1



REV. NO.	7/04/04	REVISED WATER PUMPER
CHG. NO.	0	CHG. NO.
DATE	05/01/04	DATE
DESIGNER	DAVID	DESIGNER
DRAWN BY	DAVID	DRAWN BY
CHECKED BY	DAVID	CHECKED BY
APPROVED BY	DAVID	APPROVED BY
DATE	05/01/04	DATE
CROSS SECTION		CROSS SECTION
SCALE	1/1	SCALE
DO NOT SCALE PRINT		DO NOT SCALE PRINT
ALL DIMENSIONS IN INCHES UNLESS NOTED		ALL DIMENSIONS IN INCHES UNLESS NOTED
THIS DRAWING IS THE PROPERTY OF UNIVERSAL PUMP & MOTOR CO. INC. NO REPRODUCTION IS PERMITTED WITHOUT WRITTEN PERMISSION OF UNIVERSAL PUMP & MOTOR CO. INC.		THIS DRAWING IS THE PROPERTY OF UNIVERSAL PUMP & MOTOR CO. INC. NO REPRODUCTION IS PERMITTED WITHOUT WRITTEN PERMISSION OF UNIVERSAL PUMP & MOTOR CO. INC.
UNIVERSAL PUMP & MOTOR CO. INC.		UNIVERSAL PUMP & MOTOR CO. INC.
16660 S. 16TH AVENUE		16660 S. 16TH AVENUE
IRVING, TEXAS 75038-1666		IRVING, TEXAS 75038-1666
PHONE (972) 254-1100		PHONE (972) 254-1100
FAX (972) 254-1101		FAX (972) 254-1101
WWW.UMPCO.COM		WWW.UMPCO.COM
MODEL NO. A646		MODEL NO. A646
PATTERN NO.		PATTERN NO.
DATE	05/01/04	DATE
CROSS SECTION		CROSS SECTION
SCALE	1/1	SCALE
DO NOT SCALE PRINT		DO NOT SCALE PRINT
ALL DIMENSIONS IN INCHES UNLESS NOTED		ALL DIMENSIONS IN INCHES UNLESS NOTED
THIS DRAWING IS THE PROPERTY OF UNIVERSAL PUMP & MOTOR CO. INC. NO REPRODUCTION IS PERMITTED WITHOUT WRITTEN PERMISSION OF UNIVERSAL PUMP & MOTOR CO. INC.		THIS DRAWING IS THE PROPERTY OF UNIVERSAL PUMP & MOTOR CO. INC. NO REPRODUCTION IS PERMITTED WITHOUT WRITTEN PERMISSION OF UNIVERSAL PUMP & MOTOR CO. INC.

REP #	NAME OF PART	QTY
15	OIL SEAL	1
19	LOCK WASHER	1
20	IMPELLER WASHER	1
21	GEAR CASE	1
22	PINION KEY	1
24	BEARING	2
25	PINION GEAR	1
26	DRIVE GEAR	1
27	OIL SEAL - IMPELLER SHAFT	1
28	VENT CAP	1
23	VENTPIPE	1
29	OIL FILL PLUG	1
30	PIPE PLUG, MAGNETIC	1
33	DRAIN COCK	1
40	PUMP CASING	1
41	IMPELLER NUT	1
44	GEAR CASE GASKET	1
45	IMPELLER SHAFT	1
48	DISCHARGE - REF	1
49	QUAD RING	1
50	HEX HEAD CAP SCREW	1
51	O-RING	1
52	IMPELLER SEAL RING	1
53	COTTER KEY	1
54	IMPELLER	1
55	DRIVE GEAR RETAINER WASHER	1
56	DRIVE GEAR KEY	1
57	ENGINE ADAPTER - B&S 18HP	1
59	OUTBOARD HEAD (REF)	1
64	GEAR SPACER	1
65	MECHANICAL SEAL	1
66	HOUSING - MECH. SEAL	1
68	PIPE PLUG - OIL LEVEL	1
103	HHCS 5/16 FLANGED	8



		W.S. DARLEY & CO. MELROSE PARK, IL - CHIPPEWA FALLS, WI
MATERIAL DESCRIPTION: _____		TOLERANCE EXCEPT AS NOTED .00 ±.03 .000 ±.010. ANGLES ±1
OLD PART NO. A659	PATTERN NO. -	PUMP - 1 1/2 AGE, MECH. SEAL 18HP B&S AND OTHERS
MATERIAL NO. -	DO NOT SCALE PRINT	DATE JUN07.06 SCALE 1/2
THIS DESIGN IS THE PROPERTY OF W.S. DARLEY AND CO. - UNAUTHORIZED REPRODUCTION IS PROHIBITED		DAC0114

PRIMING THE PUMP WITH AN EXHAUST PRIMER

Open the primer line shut-off valve between the primer jet and pump section. (Valve is open when the lever is in line with the air passage.)

Start the engine and run at a brisk idling speed.

Close the engine exhaust primer valve.

Close primer shut-off valve as soon as primer jet discharges water.

Open exhaust primer valve.

Repeat priming operation if pump fails to hold its prime.

For fast priming, the engine throttle may be held wide open while the engine exhaust port is closed.

When priming on high lifts or when pumping dirty water, it may be necessary to seat the discharge check valve by tightening down gently with the handwheel on top of the discharge head. Unscrew the handwheel as soon as water discharges through the exhaust jet.

If the pump does not deliver water within one minute, stop the engine and check for air leaks or failure of primer jet to produce vacuum.

COLD WEATHER OPERATION

In cold weather it is important to make sure the tubing leading from the exhaust primer to the pump casing is free from water to prevent freezing. Freezing of this tubing will render the exhaust primer inoperative and any damage tubing and fitting.

To remove water from suction tubing: Restart engine after suction line is disconnected. Open primer line shut-off valve and close engine exhaust tightly by lever valve at top of engine for five seconds. Open exhaust valve and shut off engine.

**IF FURTHER INFORMATION IS NEEDED, CALL W.S. DARLEY & CO. AT
CHIPPEWA FALLS, WI. AT 800-634-7812 or 715-726-2650**

PRIMING THE PUMP WITH HAND PRIMER

Open primer shut-off valve (handle in line with tubing), briskly cycle hand primer handle in and out until water is discharged from hand primer cylinder cap. Start engine and maintain brisk idling speed. Pump should now be discharging water. If not, cycle hand pump a few more times until discharging begins. Close primer shut-off valve.

Approximate priming time is between 10 and 30 seconds depending upon size and length of suction hose, height above water source, and hand primer cycle rate.

When priming on high lifts or when priming dirty water, it may be necessary to seat the discharge check valve by tightening down gently with the handwheel on top of the discharge head. Unscrew the handwheel as soon as engine is started.

**IF FURTHER INFORMATION IS NEEDED, CALL W.S. DARLEY & CO. AT
CHIPPEWA FALLS, WI. AT 800-634-7812 or 715-726-2650**

Mechanical Shaft Seal

This pump assembly incorporates high quality mechanical shaft seal(s) separating the pump housing components from atmosphere. Depending on the pump design, there may be one or two seals on each impeller shaft.

The seal size, design type, component materials, and housing configuration have been specifically designed for this pump application and rated operating parameters.

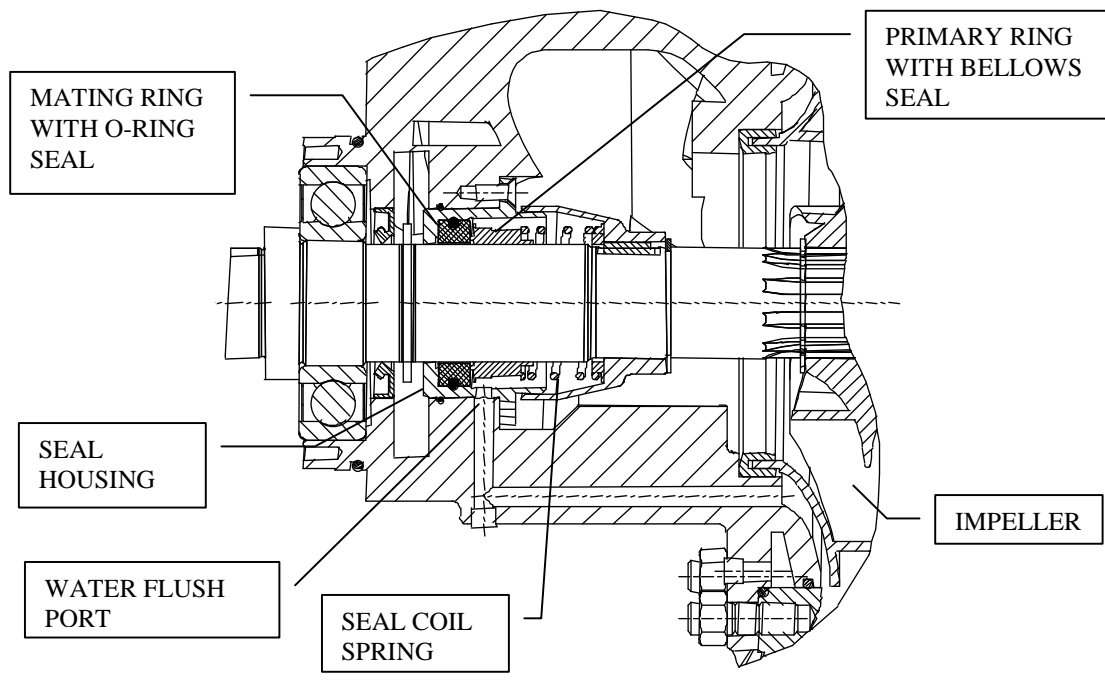
Mechanical Seal Basics

A mechanical seal is a device that houses two highly polished components (known as faces). One face rotates, the other is stationary. A secondary elastomer bellows seals the primary ring to the shaft. An o-ring or cup seal seals the mating ring in the housing. The polished seal faces of the primary and mating rings are pressed together by a spring mechanism to provide adequate force to affect a seal. The force acting between the seal faces increases in direct proportion to product pressure.

The elastomer bellows seal utilized in this pump has the following design features:

- Mechanical drive of the primary seal ring. The drive band's notch design eliminates overstressing the elastomer sealing bellows.
- Bellows design provides automatic compensation for shaft endplay, run out, and primary ring wear.
- Seal face contact pressure is controlled by a single, non-clogging coil spring. This coil spring has been custom welded per Darley specifications to eliminate high-speed spring distortion.

The seal housing is designed and ported to provide optimal water flow and pressure assuring proper cooling and flushing of the seal components.



Operation and Maintenance

When operated within rated operating conditions of this pump, these seals will provide trouble free service for extended periods.

Properly selected and applied mechanical shaft seals are leak free and require no adjustment. Should the seal area develop a leak, investigate the cause as soon as possible. Seal failure, leakage, may be the result of; worn seal faces, leaking bellows, or damaged o-rings. These failures may be attributed to bearing failure, impeller blockage, impeller imbalance, seal housing contamination, operating beyond pump design rating, or dry running,

Mechanical shaft seal design relies on the sealed media, in this case, water, to cool and lubricate the sealing surfaces. Therefore, extended dry operation may cause overheating and scoring or damage to the sealing surfaces, resulting in excessive leakage or a much shortened seal life.

To maximize seal life, minimize operation at pump pressures higher than pump rating. While operating at pressures beyond rating will not immediately damage the seal, it will increase sealing surface wear rate.



CAUTION: DO NOT RUN THE PUMP DRY EXCEPT MOMENTARILY AND AT LOW SPEEDS



CAUTION: DO NOT USE THIS PUMP FOR HOSE TESTING



CAUTION: THE MECHANICAL SEAL SHOULD NOT BE RUN DRY, WHILE THE PUMP IS NOT ENTRAINED WITH WATER, FOR A PERIOD LONGER THAN 2 MINUTES. FAILURE TO FOLLOW THIS RECOMMENDATION WILL LEAD TO PREMATURE WEAR AND FAILURE OF YOUR MECHANICAL SHAFT SEAL.



DARLEY

INSTALLATION OF MECHANICAL FACE SEAL WITH O’RING

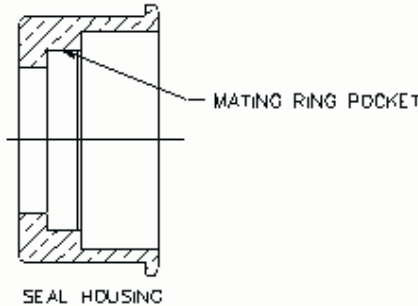
SPECIAL HANDLING

Study the engineering layout before installing the seal. This shaft seal is a precision product and should be handled and treated with care. Take special care to prevent scratches on the lapped faces of the primary and mating ring. Provide a very clean work area where the assembly will take place. Clean hands prior to assembly.

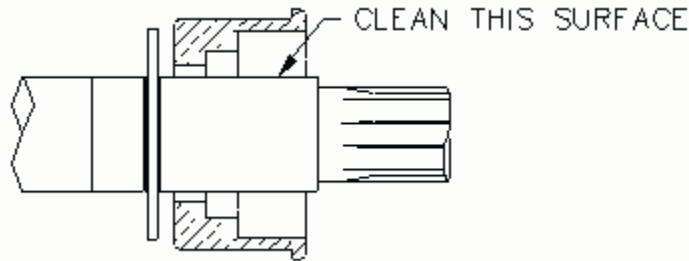
INSTRUCTION STEPS:

Instructions for Installing a Mechanical Shaft Seal

1. Inspect mating ring pocket in seal housing ensuring it is clean, free of chips, and nick free, to provide a proper sealing surface. Isopropyl alcohol may be used to clean the surfaces if required.

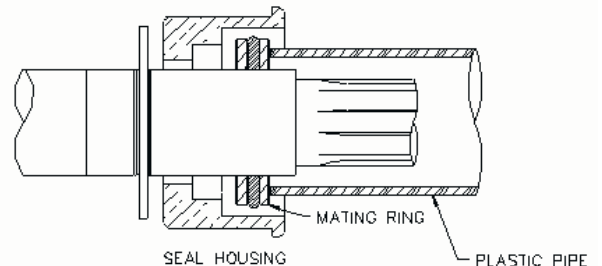
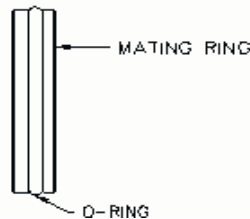
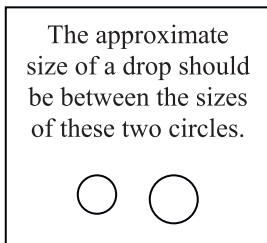


2. Inspect the pump shaft surface under the bellows, ensuring it is clean and nick free to provide a proper sealing surface. Isopropyl alcohol may be used to clean surface if required.



3. Lightly lubricate the o-ring on the mating ring with a single drop of P-80 water soluble rubber lubricant (do not over lubricate) and push it into the cavity using the recommended installation tool or other suitable plastic tube free of contaminants, firmly seating the mating ring square.

Note: The polished face of the mating ring must face out – away from the pump’s gear case. Try to not touch the polished sealing face with your fingers; the oils from your fingerprint can cause the seal to leak. Remove any P-80 from the sealing face after installation.

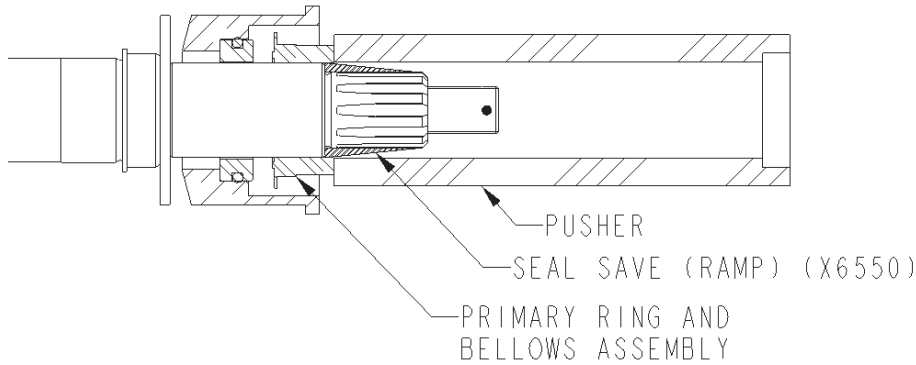


4. Clean the mating ring surface with isopropyl alcohol to remove any fingerprints and any other contaminants left on mating ring.

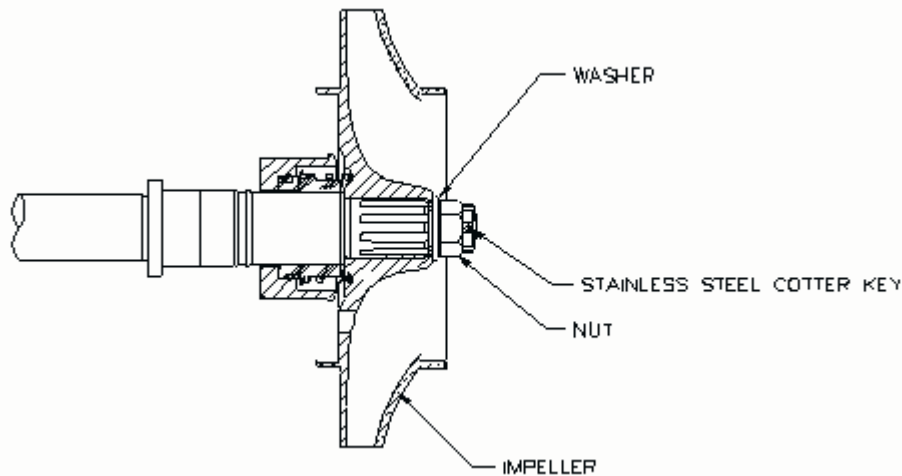
Note: Steps 5 – 9 need to all be completed with in 15 minutes or less.

5. Apply a small drop of P-80 rubber lubricant or water-soluble lubricant (not soapy water) to the inside diameter of the bellows assembly allowing it to be pushed easily into position.
6. Clean the polished sealing face of the primary ring with a clean lint free rag with isopropyl alcohol to remove all fingerprints and other contaminants.
7. Slide a seal save, similar to X6550, over the shaft splines to ensure that the seal is not damaged during installation. Place the primary ring and lubricated bellows assembly (without the spring) on the shaft, using a proper pusher - push the assembly into position so that the seal surfaces are in contact. Remove the seal save from the shaft.

The approximate size of a drop should be between the sizes of these two circles.



8. Put the spring in place, seated tight against the spring retainer on the primary ring.
Note: Some springs may be slightly tapered, so one end fits the seal better than the other. The end of the spring that best fits the seal should go towards the seal to ensure even spring pressure all the way around.
9. Slide impeller onto impeller shaft, engage the spring into the groove of the impeller hub and install impeller washer, impeller nut, and stainless steel cotter key.



** Reference pump configuration for individual mechanical seal instructions.

** Reference pump assembly drawings and pump assembly tips for further assembly.

Note: If the seal leaks slightly after assembly, it may be necessary to run the pump for approximately 30 minutes at 50-60 psi to rinse out excess lubricant and other contaminants.

Once a mechanical seal has been installed, it is recommended that it not be reused.

If further information is needed, call **DARLEY** in Chippewa Falls, WI. at 800-634-7812 or 715-726-2650



W. S. DARLEY & CO.

DARLEY INJECTION TYPE STUFFING BOX ADJUSTMENT

⚠ Prop 65 Warning: This product contains lead, a chemical known to the State of California to cause cancer, birth defects, and other reproductive harm. Wash hands after handling.

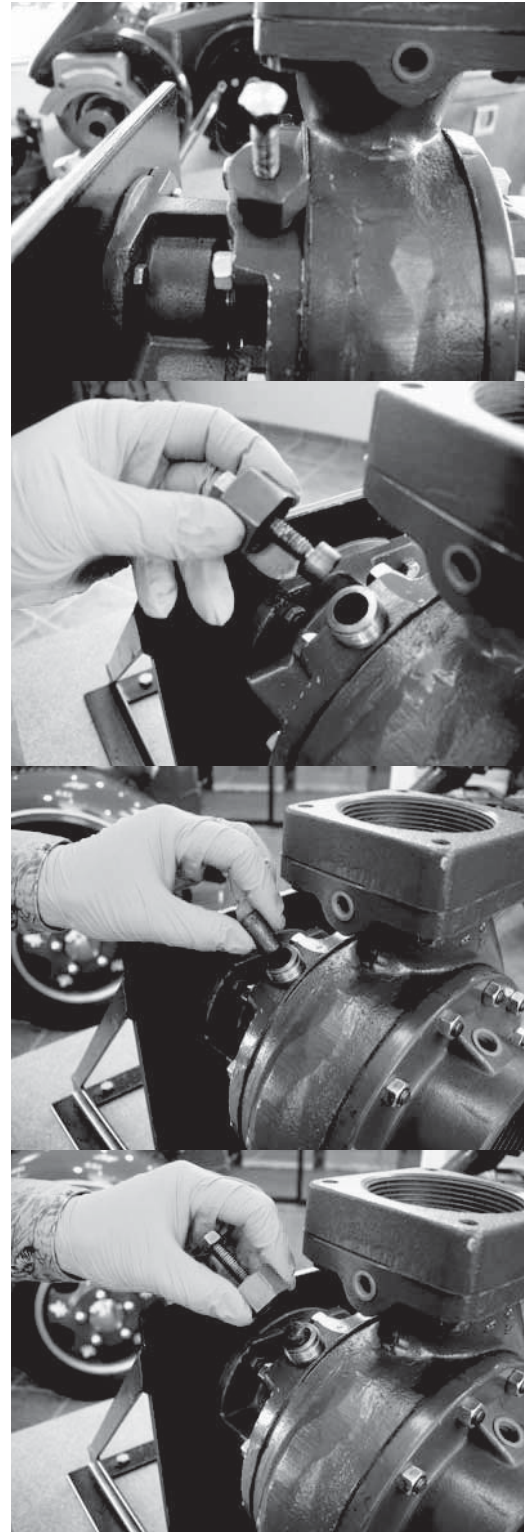
⚠ Caution: Do not attempt to use anything but Darley injection packing. Using the wrong packing material in your pump may cause catastrophic failure of the pump shaft sealing components.

Only use W.S. Darley & Co.'s plastallic injection packing material. It is made of a special composition of shredded fibers, and a special bonding and lubricating compound.

It is important that the stuffing box is completely filled solid with packing and compressed firm during adjustment to prevent formation of voids and excessive leakage.

To pack the stuffing box when empty and assembled in the pump, remove the packing screw and nut assembly, and insert pellet form packing into the packing plunger guide. Replace the packing screw assembly and use a hand speed wrench to force the pellets into the gland. **DO NOT USE A POWER TOOL!** Repeat pellet additions while turning the impeller shaft by hand until resistance to turning is felt when the stuffing box is almost full. Continue turning packing screw by hand using a standard 6" long 9/16" end wrench until 4 lb. of force is felt at the end of the wrench. This is equivalent to 2 ft-lb or 24 in-lb torque. Continue turning until a few flakes of packing are extruded out the opening between the impeller shaft and the stuffing box hole. The gland is now ready for pressure testing or pumping.

After priming the pump with water, start the pump and raise the discharge pressure to 50 psi. Tighten the packing screw using a 6" long 9/16" end wrench until 4 lb. force is felt at the end of the wrench (24 in-lb torque). Continue operating the pump at 50 psi for 5 minutes to dissipate packing pressure against the shaft and permit cooling water to flow between the shaft and stuffing box hole. Make sure that water actually does come through before operating pump at any higher pressure. The normal drip rate may vary between 5 and 60 drops per minute.



Operate the pump for 10 minutes at the highest normal operating pressure flowing sufficient water to prevent overheating. Do not run the pump blocked tight. Lower discharge pressure to 50 psi and repeat the packing screw tightening procedure outlined above.

The pump may now be operated for any time period required within its rated capacity. However, the drip rate should be monitored more frequently during the first few hours, and adjusted if necessary to achieve a stable flow rate. Several more adjustments may be required.



For a list of approximate quantity of packing pellets required by model (completely repacked), see below:

Model	Approximate # Packing Pellets
A	6
2BE	6
EM	15
H	8
JM	8
KD	10
KS	8
LD	15
LS	9
P	10
U2	5
U4	10

If further information is needed, call **W.S. DARLEY & CO.**
at Chippewa Falls, WI. at 800-634-7812 or 715-726-2650

DEFINITIONS

HEAD OF WATER -- vertical depth of water measured in feet or in pressure per unit or area. In hydraulics, head always represents pressure and it is expressed interchangeably in feet of water or pounds per square inch and sometimes in inches of depth of mercury.

STATIC HEAD -- the pressure that is exerted by a stationary column of water of a given height or depth.

TOTAL HEAD OR TOTAL DYNAMIC HEAD -- the maximum height above the source of supply to which the pump would elevate the water plus all the resistance to flow in the pipe or hose line.

DISCHARGE HEAD -- the pressure measured at the discharge outlet of a pump.

SUCTION HEAD -- the positive pressure measured at the suction entrance of a pump (when pumping from an elevated tank or hydrant).

VELOCITY HEAD -- the equivalent pressure represented by fluid in motion as measured by means of a Pitot Gage.

STATIC LIFT -- the vertical height of the center of the pump above the source of supply (when pump from draft).

TOTAL SUCTION LIFT -- the static lift plus the friction in suction line plus entrance losses.

NET PUMP PRESSURE -- the total dynamic head of the pump.

EFFECTIVE NOZZLE PRESSURE -- the pump discharge pressure minus hose friction plus or minus the difference in elevation above or below pump.

WATER HORSEPOWER - the theoretical power required to deliver a given quantity of water per minute against a given head.

BRAKE HORSEPOWER -- Actual power as delivered by a motor or engine to a driven machine.

PUMP EFFICIENCY -- The quotient of the water horsepower divided by brake horsepower required to produce it.

WATER HAMMER -- a series of shock waves produced in a pipeline or pump by a sudden change in water velocity. A sudden change in flow velocity can result from rapid closure of valves. A pressure wave is set up which travels back and forth in the water column at extremely high speed producing rapid vibrations that may be violent and destructive if the water column is long.

THE MAXIMUM THEORETICAL LIFT of a pump is 34 feet, which is the pressure of the atmosphere at sea level. The maximum practical total lift at sea level is 20 to 25 feet (depending on the type and condition of the pump) and this decreases with drops in barometric pressure.

OPERATING CHARACTERISTICS OF PUMPS

CENTRIFUGAL PUMPS: A centrifugal pump develops pressure by centrifugal force of the liquid rotating in the impeller wheel. The pressure developed depends upon the peripheral speed of the impeller (increasing as the square of the speed) and it remains fairly constant over a wide range of capacities up to the maximum output of the pump, if speed remains constant.

If the discharge outlet of a centrifugal pump is entirely shut off, with speed kept constant, there is a small rise in pressure, the water churns in the pump casing and the power drops to a low value. If the discharge is opened wide, with little resistance to flow the pressure drops while the capacity and power both increase to their maximum.

A centrifugal pump is an extremely simple mechanism mechanically, but rather complex hydraulically; in that many factors enter into the design of the impeller and water ways which will affect the pump's efficiency.

DISPLACEMENT PUMPS: Rotary and piston pumps are termed "Positive Displacement" pumps because each revolution displaces or discharge (theoretically) an exact amount of liquid, regardless of the resistance. The capacity is, therefore, proportional to the number of revolutions of the pump per minute and independent of the discharge pressure except as it is reduced by "slip" (leakage past the pistons or rotors). For a given speed the power is directly proportional to the head. If the discharge is completely shut off, the pressure, power, and torque climb indefinitely until the drive power is stalled or breakage occurs.

Slip is the greatest factor affecting efficiency of a displacement pump, and this factor is greatly influenced by the condition of and wears on the working parts.

**IF FURTHER INFORMATION IS NEEDED, CALL W.S. DARLEY & CO. AT
CHIPPEWA FALLS, WI. AT 800-634-7812 or 715-726-2650**

CONVERSION FACTORS

One pound per square inch	=	2.31 feet of water
	=	2.04 inches of mercury
	=	27.7 inches of water
One foot of water	=	0.43 pounds per square inch
One inch of mercury	=	1.13 feet of water
	=	0.49 pounds per square inch
One cubic foot of water	=	62.4 pounds
	=	7.5 gallons
One gallon of water	=	231 cubic inches
	=	0.13 cubic feet
	=	8.34 pounds
	=	3.8 liters
One Imperial Gallon	=	1.2 U.S. gallons
Atmospheric Pressure (Sea Level)	=	14.8 pounds per square inch
	=	29.9 inches of mercury
	=	34 feet of water

TABLE NO. 2
DISCHARGE FROM SMOOTH BORE NOZZLE
Pressures measured by Pitot gage.

Nozzle Pressure PSI	1/4	3/8	1/2	5/8	3/4	7/8	1	1 1/8	1 1/4	1 3/8	1 1/2	1 5/8	1 3/4	2	2 1/4	2 1/2
	GALLONS PER MINUTE DELIVERED															
5	4	9	16	26	37	50	66	84	103	125	149	175	203	266	337	415
6	4	10	18	28	41	55	72	92	113	137	163	192	223	292	369	455
7	4	11	19	30	44	59	78	99	122	148	176	207	241	315	399	491
8	5	11	21	32	47	64	84	106	131	158	188	222	257	336	427	525
9	5	12	22	34	50	67	89	112	139	168	200	235	273	357	452	557
10	6	13	23	36	53	71	93	118	146	177	211	248	288	376	477	587
12	6	15	25	40	58	78	102	130	160	194	231	271	315	412	522	643
14	7	15	27	43	63	84	110	140	173	210	249	293	340	445	564	695
16	7	16	29	46	67	90	118	150	185	224	267	313	364	475	603	743
18	7	17	31	49	71	95	125	159	196	237	283	332	386	504	640	788
20	8	18	33	51	75	101	132	167	206	250	298	350	407	532	674	830
22	8	19	34	54	79	105	139	175	216	263	313	367	427	557	707	871
24	8	20	36	56	82	110	145	183	226	275	327	384	446	582	739	909
26	9	21	37	59	85	115	151	191	235	286	340	400	464	606	769	947
28	9	21	39	61	89	119	157	198	244	297	353	415	481	629	799	982
30	10	22	40	63	92	123	162	205	253	307	365	429	498	651	826	1017
32	10	23	41	65	95	127	167	212	261	317	377	443	514	673	854	1050
34	11	23	43	67	98	131	172	218	269	327	389	457	530	693	880	1082
36	11	24	44	69	100	135	177	224	277	336	400	470	546	713	905	1114
38	11	25	45	71	103	138	182	231	285	345	411	483	561	733	930	1144
40	11	26	46	73	106	142	187	237	292	354	422	496	575	752	954	1174
42	11	26	47	74	109	146	192	243	299	363	432	508	589	770	978	1203
44	12	27	49	76	111	149	196	248	306	372	442	520	603	788	1000	1231
46	12	28	50	78	114	152	200	254	313	380	452	531	617	806	1021	1259
48	12	28	51	80	116	156	205	259	320	388	462	543	630	824	1043	1286
50	13	29	52	81	118	159	209	265	326	396	472	554	643	841	1065	1313
52	13	29	53	83	121	162	213	270	333	404	481	565	656	857	1087	1339
54	13	30	54	84	123	165	217	275	339	412	490	576	668	873	1108	1364
56	13	30	56	86	125	168	221	280	345	419	499	586	680	889	1129	1389
58	13	31	56	87	128	171	225	285	351	426	508	596	692	905	1149	1414
60	14	31	57	89	130	174	229	290	357	434	517	607	704	920	1168	1437
62	14	32	58	90	132	177	233	295	363	441	525	617	716	936	1187	1462
64	14	32	59	92	134	180	237	299	369	448	533	627	727	951	1206	1485
66	14	33	60	93	136	182	240	304	375	455	542	636	738	965	1224	1508
68	14	33	60	95	138	185	244	308	381	462	550	646	750	980	1242	1531
70	15	34	61	96	140	188	247	313	386	469	558	655	761	994	1260	1553
72	15	34	62	97	142	191	251	318	391	475	566	665	771	1008	1278	1575
74	15	35	63	99	144	193	254	322	397	482	574	674	782	1023	1296	1597
76	15	35	64	100	146	196	258	326	402	488	582	683	792	1036	1313	1618
78	15	36	65	101	148	198	261	330	407	494	589	692	803	1050	1330	1639

TABLE NO. 2
DISCHARGE FROM SMOOTH BORE NOZZLE
Pressures measured by Pitot gage.

Nozzle Pressure PSI	1/4	3/8	1/2	5/8	3/4	7/8	1	1 1/8	1 1/4	1 3/8	1 1/2	1 5/8	1 3/4	2	2 1/4	2 1/2
	GALLONS PER MINUTE DELIVERED															
80	16	36	66	103	150	201	264	335	413	500	596	700	813	1063	1347	1660
82	16	37	66	104	152	204	268	339	418	507	604	709	823	1076	1364	1681
84	16	37	67	105	154	206	271	343	423	513	611	718	833	1089	1380	1701
86	16	37	68	107	155	208	274	347	428	519	618	726	843	1102	1396	1721
88	16	38	69	108	157	211	277	351	433	525	626	735	853	1115	1412	1741
90	17	39	70	109	159	213	280	355	438	531	633	743	862	1128	1429	1761
92	17	39	70	110	161	215	283	359	443	537	640	751	872	1140	1445	1780
94	17	39	71	111	162	218	286	363	447	543	647	759	881	1152	1460	1800
96	17	40	72	113	164	220	289	367	452	549	654	767	890	1164	1476	1819
98	17	40	73	114	166	223	292	370	456	554	660	775	900	1176	1491	1838
100	18	41	73	115	168	225	295	374	461	560	667	783	909	1189	1506	1856
105	18	42	75	118	172	230	303	383	473	574	683	803	932	1218	1542	1902
110	19	43	77	121	176	236	310	392	484	588	699	822	954	1247	1579	1947
115	19	43	79	123	180	241	317	401	495	600	715	840	975	1275	1615	1991
120	19	44	80	126	183	246	324	410	505	613	730	858	996	1303	1649	2033
125	20	45	82	129	187	251	331	418	516	626	745	876	1016	1329	1683	2075
130	20	46	84	131	191	256	337	427	526	638	760	893	1036	1356	1717	2116
135	21	47	85	134	195	262	343	435	536	650	775	910	1056	1382	1750	2157
140	21	48	87	136	198	266	350	443	546	662	789	927	1076	1407	1780	2196
145	21	49	88	139	202	271	356	450	556	674	803	944	1095	1432	1812	2235
150	22	50	90	141	205	275	362	458	565	686	817	960	1114	1456	1843	2273

TABLE NO. 3
Approximate Discharge Flow From Different Nozzles
At the end of Fifty Feet of Average, 2 1/2”
Rubber Lined Fire Hose, for Various
Pump Pressures with Discharge
Valve Wide Open

PUMP PRESSURE LBS	SIZE OF NOZZLE & GALLONS PER MINUTE						
	3/4	7/8	1	1 1/8	1 1/4	1 3/8	1 1/2
30	90	119	153	187	217	250	282
40	103	137	177	216	253	290	327
50	115	153	198	242	284	325	367
60	126	168	216	265	311	357	402
70	136	182	234	287	337	385	435
80	145	194	250	308	361	414	465
90	154	206	265	325	383	437	492
100	162	217	280	343	405	462	520
110	171	228	295	360	425	485	549
120	179	239	307	377	444	510	572
130	186	249	318	392	462	530	596
140	193	258	330	407	480	549	618
150	200	267	341	421	497	567	
175	215	288	374	455	538		
200	230	309	395	486			
225	243	328	420				
250	257	345					

This table is offered as an aide in testing pump performance where facilities for accurate measurement of capacity are not available. The capacities given above are conservative, and will not vary more than 5% from actual capacities with any of the standard hose that might be used.

TABLE NO. 4

**Pump or Hydrant Pressure required to give
Effective Nozzle Pressure through various
Lengths of Rubber Lined Hose.**

Size of Hose		1		1 1/2		2		2 1/2				3		
Size of Nozzle		1/4	3/8	1/2	5/8	5/8	3/4	3/4	7/8	1	1 1/4	1 1/2	1 1/4	1 1/2
Nozzle Press PSI	Length of Hose Feet	PUMP OR HYDRANT PRESSURE - PSI												
40	100	45	43	48	60	42	50	44	46	51	64	88	51	62
	200	49	46	56	79	43	60	47	52	60	86	130	59	78
	400	58	51	73	118	46	79	53	62	79	129	212	75	110
	600	67	57	89	158	50	99	59	74	97	172		92	143
	800	76	62	106	196	53	119	65	85	116	215		108	176
	1000	85	68	122	235	56	138	72	96	134	258		124	208
	1500	108	72	142		64	187	87	118	181			165	
	2000	130	96	204		72	226	103	151	227			205	
60	100	67	64	72	89	63	73	65	69	75	95	132	76	92
	200	74	68	84	117	65	86	70	78	89	126	196	88	115
	400	87	76	107	173	69	112	79	94	116	188		111	161
	600	101	85	131	231	74	138	88	111	143	250		135	208
	800	114	93	153		79	164	98	127	170			158	
	1000	127	101	178		83	190	107	143	197			182	
	1500	161	122	237		95	155	130	184	264				
	2000	195	142			106		153	225					
80	100	88	85	96	117	83	99	87	92	99	126	175	101	103
	200	97	91	112	154	86	117	93	103	115	167		116	154
	400	115	102	143	228	92	154	105	125	148	249		147	
	600	132	112	174		98	191	117	147	181			178	
	800	150	123	206		104	228	129	167	214			209	
	1000	167	134	238		110		141	191	247				
	1500	211	161			125		171	245					
	2000	254	188			140		201						
100	100	111	107	120	146	104	123	108	115	125	157		126	152
	200	122	113	139	192	108	145	116	128	150	209		146	190
	400	143	127	177	284	115	190	130	154	200			184	
	600	165	140	217		123	235	145	180	250			223	
	800	186	154	256		131		159	206					
	1000	208	167			138		174	232					
	1500	262	200			157		211						
	2000		234			175		253						

**TABLE NO. 5
REACH OF FIRE STREAMS**

Size of Nozzle	1/4"	3/8"	1/2"	5/8"	3/4"	7/8"	1"	1-1/4"	1-1/2"
-----------------------	-------------	-------------	-------------	-------------	-------------	-------------	-----------	---------------	---------------

**NOZZLE
PRESSURE EFFECTIVE VERTICAL REACH - Feet**

40	30	35	40	50	59	62	64	65	69
60	35	40	45	60	74	77	79	84	87
80	38	42	48	65	81	85	89	94	96
100	40	44	50	68	84	89	94	100	102

**NOZZLE
PRESSURE MAXIMUM VERTICAL REACH - Feet**

40	60	65	70	75	78	79	80	80	80
60	70	75	85	95	105	106	108	110	110
80	78	83	95	105	117	125	132	140	140
100	80	88	100	110	122	135	145	155	155

**NOZZLE
PRESSURE EFFECTIVE HORIZONTAL REACH - Feet**

40	20	25	30	40	44	50	55	62	66
60	25	32	37	50	54	61	67	75	80
80	28	35	40	57	62	70	76	84	88
100	30	37	42	60	66	76	84	93	95

**NOZZLE
PRESSURE MAXIMUM HORIZONTAL REACH - Feet**

40	65	80	90	100	108	120	125	138	140
60	80	95	95	120	127	142	156	176	183
80	90	105	105	135	143	160	175	201	210
100	95	110	110	140	153	180	205	215	223

TABLE NO. 6
Friction Loss in Fire Hose
 Loss in PSI per 100 Feet of Hose

SIZE HOSE G.P.M.	LINEN HOSE			BEST RUBER LINED HOSE							
	1 1/2	2	2 1/2	3/4	1	1 1/2	2	2 1/2	3	3 1/2	(2)-2 1/2
10	1.0			13.5	3.5	0.5	.1				
15	2.2			29.0	7.2	1.0	0.3				
20	3.6			50.0	12.3	1.7	0.4				
25	5.5			75.0	18.5	2.6	0.6				
30	8.0	1.9		105.0	26.0	3.6	0.9				
40	13.0	3.2		180.0	44.0	6.1	1.5				
50	20.0	4.9	1.6		67.0	9.3	2.3				
60	28.0	7.0	2.2		96.0	13.5	3.3				
70	37.0	9.0	3.1		131.0	17.0	4.3				
80	47.0	11.5	3.8		171.0	23.0	5.6				
90	59.0	14.5	5.0		217.0	29.0	7.0				
100	72.0	17.5	5.9		268.0	33.0	8.4				
120		25.0	8.3		386.0	47.0	11.7				
140		34.0	11.0			62.0	16.0	5.2	2.0	0.9	1.4
160		43.0	14.0			78.0	20.0	6.6	2.6	1.2	1.9
180		53.0	17.7			97.0	25.0	8.3	3.2	1.5	2.3
200		63.0	21.5			121.0	30.6	10.1	3.9	1.8	2.8
220						146.0		12.0	4.6	2.1	3.3
240						173.0		14.1	5.4	2.5	3.9
260						204.0		16.4	6.3	2.9	4.5
280						237.0		18.7	7.2	3.3	5.2
300						272.0		21.2	8.2	3.7	5.9
320								23.8	9.3	4.2	6.6
340								26.9	10.5	4.7	7.4
360								30.0	11.5	5.2	8.3
380								33.0	12.8	5.8	9.2
400								36.2	14.1	6.3	10.1
425								40.8	15.7	7.0	11.3
450								45.2	17.5	7.9	12.5
475								50.0	19.3	8.7	13.8
500								55.0	21.2	9.5	15.2
525									23.2	10.5	16.6
550									25.2	11.4	18.1
575									27.5	12.4	19.6
600									29.9	13.4	21.2
650									34.5	15.5	24.8
700									39.5	17.7	28.3
750									45.0	20.1	32.2
800									50.5	22.7	36.2
850									56.5	25.4	40.7
900									63.0	28.2	45.2
1000									76.5	34.3	55.0

Losses in rough walled, rubber hose may be 50% higher than values given above.

TABLE NO. 7
Friction Loss in 15-year-old Steel Pipe
 Loss in PSI per 100 Feet of Pipe

PIPE SIZE G.P.M.	1/8	1/4	3/8	1/2	3/4	1	1 1/4	1 1/2	2	2 1/2	3	4	6	8
1	52.0	12.0	2.8	0.9										
2		45.0	10.0	3.2	4.0									
5			55.0	18.0	4.5	1.4	0.4							
10				64.0	16.0	5.0	1.3	0.6						
15				135.0	34.0	11.0	2.7	1.3	0.5					
20					59.0	18.0	4.7	2.2	0.8					
25					89.0	27.0	7.1	3.4	1.2					
30					125.0	39.0	10.0	4.7	1.7	0.6				
35						51.0	13.0	6.3	2.2	0.7				
40						66.0	17.0	8.0	2.9	0.9				
45						82.0	21.0	10.0	3.6	1.2				
50						99.0	26.0	12.0	4.3	1.4	0.6			
60						140.0	38.0	17.0	6.1	2.0	0.8			
70							49.0	23.0	8.0	2.7	1.1			
80							63.0	29.0	10.0	3.4	1.5			
90							78.0	36.0	13.0	4.3	1.8			
100							96.0	44.0	15.0	5.1	2.2	0.5		
125							144.0	66.0	24.0	7.8	3.3	0.8		
150								93.0	33.0	11.0	4.6	1.1		
175								125.0	44.0	15.0	6.1	1.5		
200									56.0	19.0	7.8	1.9		
250									84.0	28.0	12.0	2.9		
300									114.0	40.0	16.0	4.0	0.6	
350										53.0	22.0	5.4	0.8	
400										68.0	28.0	6.9	1.0	
450										84.0	35.0	8.6	1.2	
500										102.0	42.0	10.0	1.4	0.4
600											60.0	15.0	2.1	0.6
800												25.0	3.5	1
1000												37.0	5.2	1.3
1500													11.0	2.7
2000													19.0	4.7
2500													29.0	7.1
3000														10

TABLE NO. 8
Resistance of Fittings
Equivalent Lengths of Straight Pipe - Feet

PIPE SIZE	1/2	3/4	1	1 1/4	1 1/2	2	2 1/2	3	4	5	6	8
Gate Valve	0.4	0.6	0.8	1.1	1.4	1.8	2.2	2.8	4.1	5.3	6.7	9.4
Global Valve	3.0	4.5	6.0	8.5	10.5	14.0	17.0	22.0	32.0	42.0	53.0	75.0
Angle Valve	1.4	2.0	2.7	3.8	4.8	6.3	7.9	10.5	14.5	18.5	23.0	33.0
Std. Elbow	1.1	1.5	2.0	2.8	3.5	4.7	5.8	7.5	11.0	14.0	18.0	24.0
45 Elbow	0.6	0.8	1.0	1.4	1.6	2.1	2.5	3.1	4.2	5.2	6.3	8.5
Long Sweep EI Str Run Tee	0.5	0.8	1.0	1.4	1.7	2.3	2.8	3.7	5.3	7.0	9.0	12.5
Std. Tee Thru Side Outlet	2.1	2.9	3.9	5.5	6.9	9.1	11.6	14.8	21.0	27.0	34.0	49.0
Sudden Enlarg or contraction	1.8	2.5	3.2	4.2	5.0	6.5	7.5	9.5	13.0	16.0	19.0	25.0
Entrance to Pipe	1.0	1.3	1.6	2.2	2.6	3.3	3.9	4.9	6.5	8.2	10.0	13.0

TABLE NO. 9
To Convert Pounds per Square Inch to
Feet Elevation of Water

2.308ft head = 1.0 psi
1ft head = .433psi

Feet	5	10	15	20	25	30	35	40	45	50	60	70	80	90
Pounds	2.2	4.3	6.5	8.7	11	13	15	17	20	22	26	30	35	39
Feet	100	120	130	140	150	160	170	180	190	200	220	240	260	280
Pounds	43	52	56	61	65	69	74	78	82	87	95	104	113	121
Feet	300	320	340	360	380	400	425	450	475	500	525	550	600	700
Pounds	130	139	147	156	165	173	184	195	206	217	227	238	260	303

Table NO. 10
American National Fire Hose Connection Screw Thread - NH

Size of Hose	4-Mar	1	1 1/2	2 1/2	3	3 1/2	4	4 1/2	5	6	8
Thr'ds per inch	8	8	9	7.5	6	6	4	4	4	4	4
Thread Designation	0.75-8 NH	1-8 NH	1.5-9 NH	2.5-7.5 NH	3-6 NH	3.5-6 NH	4-4 NH	4.5-4 NH	5-4 NH	6-4 NH	8-4 NH
Max. O.D. Male	1.375	1.375	1.99	3.0686	3.6239	4.2439	5.0109	5.7609	6.26	7.025	9.05

Ref. NFPA 1963

Underwriters Nozzle Tip Thread: 2.1875 O.D. - 12 threads per inch.

IF FURTHER INFORMATION IS NEEDED, CALL W.S. DARLEY & CO. AT
CHIPPEWA FALLS, WI. AT 800-634-7812 or 715-726-2650

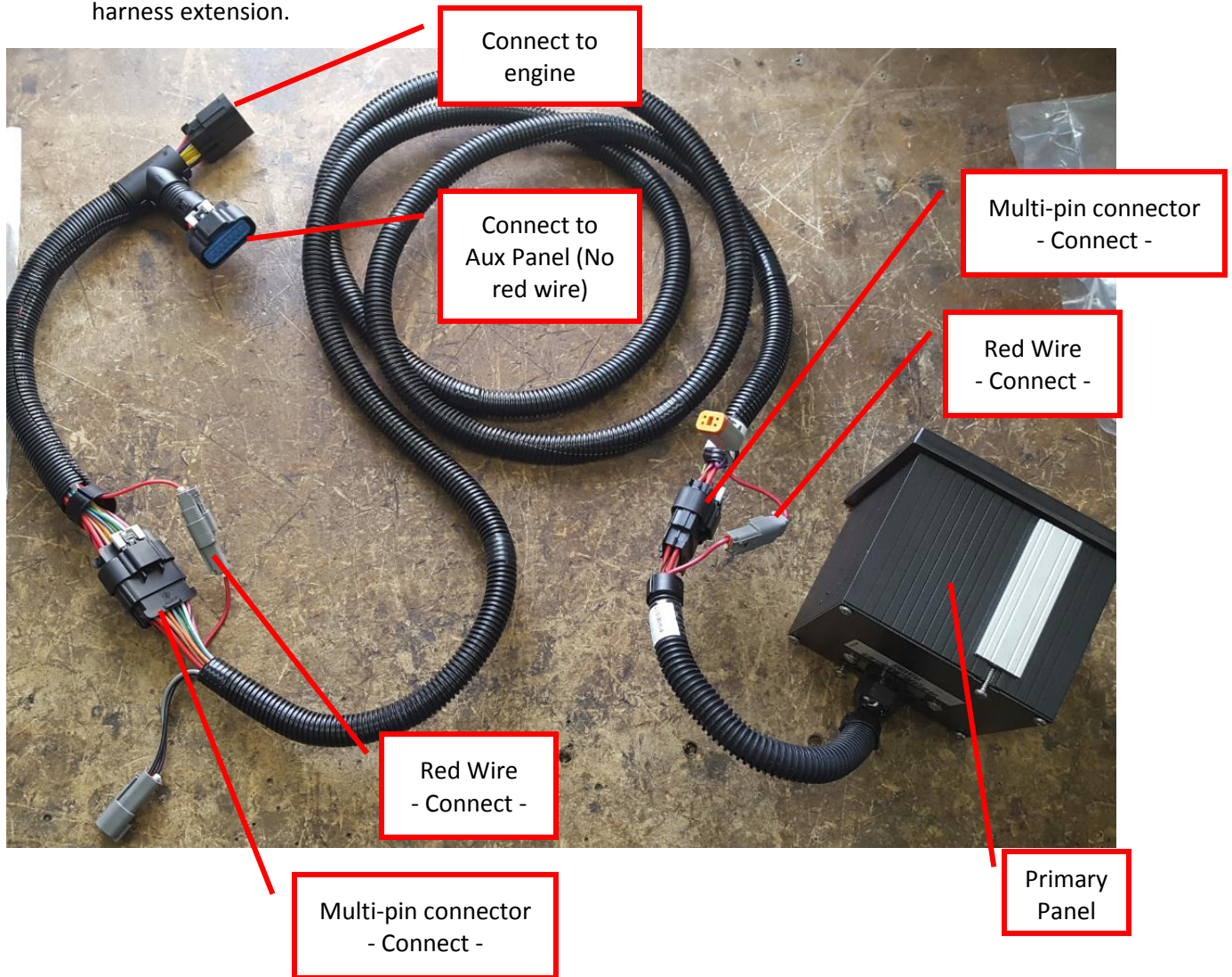
To operate the Auxiliary Lofa panel in a Dual panel configuration, the Primary Lofa panel (sometimes referred to as the “Master” panel) has to have the ignition switch turned all the way counter clockwise – in the AUTO START position.



When the Primary panel is switched to “AUTO START” the Auxiliary panel should have full functionality. When the Auxiliary panel has the control, the engine can be turned off by either panel being turned to the “OFF” position.

When connecting the dual panels to the engine, there will be a wye harness that attaches to the engine.

- From the wye harness, one side has a red wire that is plugged into the red wire in the harness extension that goes to the Primary panel.
- At the Primary panel, there will also be a red wire that plugs from the harness extension to the Primary panel.
- This red wire must be attached at the Primary panel, **AND** at the wye harness, or the Auxiliary panel will not work. This is in addition to the multi pin connector that plugs in at each end of the harness extension.





Pressure Transducer
0 to 500 psi
4-20mA



Seamless Dual Panel Control

System Operation

With system power ON:

1. Push button engine start/stop from either station (10 second pre-heat period)
2. Throttle increase/decrease from either station
3. Pressure maintain throttle switch (Select PSI and speed adjusts to maintain)
4. Shutdown override switch for run to fail operation

MVP Display/Controller (Metric/English Selectable)

- Engine Temperature
- Battery Voltage
- Engine Speed
- Fuel Level %
- Oil Pressure
- Engine Hours

Engine Protections for:

- High Engine Temperature (Default = Alarm/Shutdown)
- Low Oil Pressure (Default = Alarm/Shutdown)
- Over Speed (Default = Off)
- Fuel Level (Default = Off)

Alarm Log records alarms with engine hour stamp.

MSG Pressure Gauge (Metric/English Selectable)

- Displays pressure (PSI/BAR)
- Low Pump Water Pressure Shutdown (shut down at 15 psi, 10 second start up delay)

Panel Materials

- Anodized aluminum plate (.09" thickness both panels)
- Panel Color (Gray metallic background with black lettering)
- Panel dimensions (8.5"H x 7.375"W)
- Panel dimensions (7.375"H x 8.5"W)
- Metalphoto graphics and coating (for superior performance and scratch resistance)
- Mounting hardware not provided

Notes:

- All components and connectors are water tight
- Modular panel system with custom extension harnesses available for plug and play installation and servicing
- 10 ft. and 20 ft. extension harnesses available
- RED OLED displays
- Momentary "push to start/push to stop" with over crank protection
- Green lamp for panel power indication (not engine run)
- 15 amp circuit breaker pre-installed for easy access
- 5 second glow plug sequence when panel is powered ON